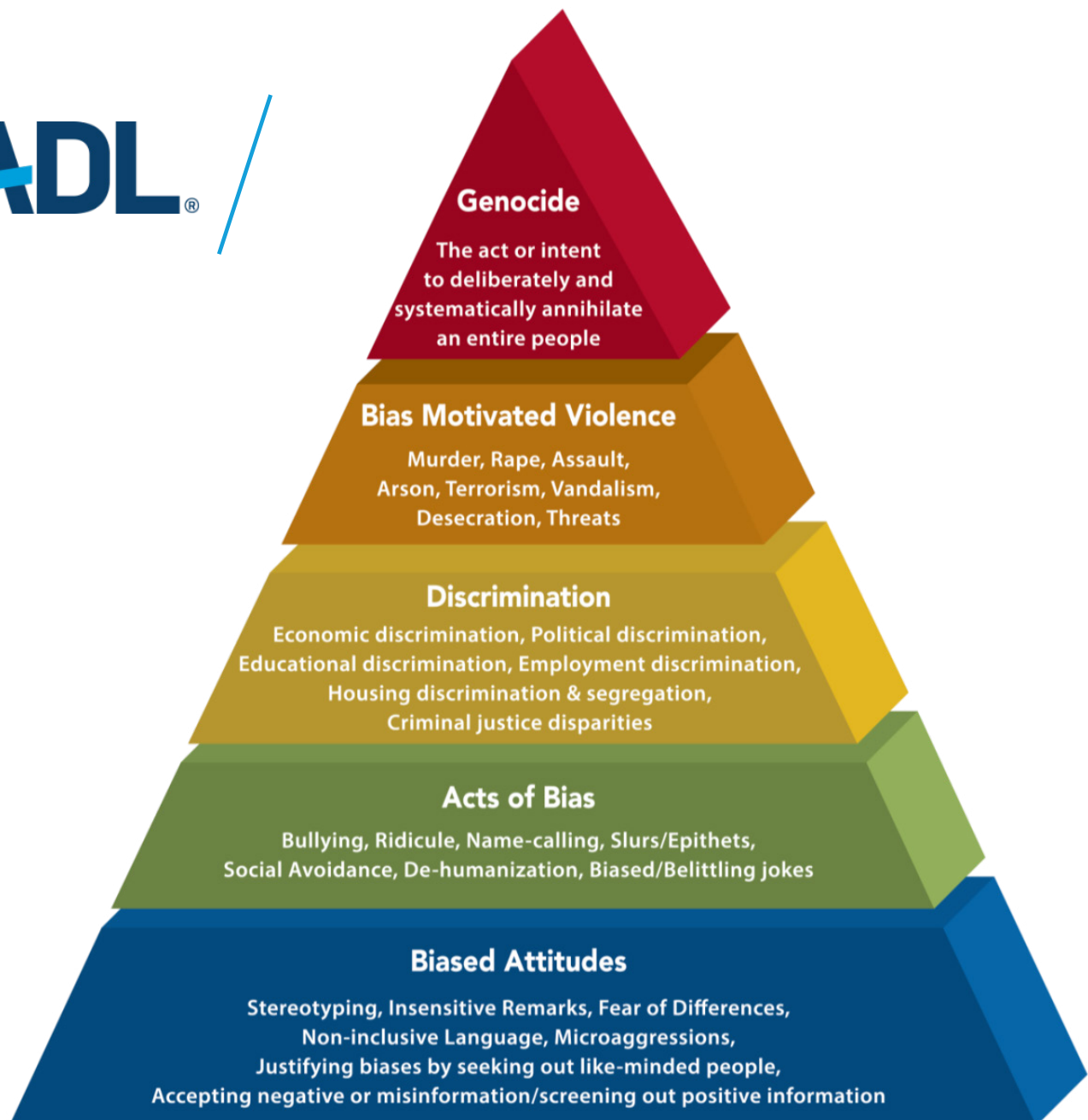


# PYRAMID OF HATE

## Resource 6-5

The Pyramid shows biased behaviors, growing in complexity from the bottom to the top. Although the behaviors at each level negatively impact individuals and groups, as one moves up the pyramid, the behaviors have more life-threatening consequences. Like a pyramid, the upper levels are supported by the lower levels. If people or institutions treat behaviors on the lower levels as being acceptable or “normal,” it results in the behaviors at the next level becoming more accepted. In response to the questions of the world community about where the hate of genocide comes from, the Pyramid of Hate demonstrates that the hate of genocide is built upon the acceptance of behaviors described in the lower levels of the pyramid.



© 2018 Anti-Defamation